




# Certificate of Analysis

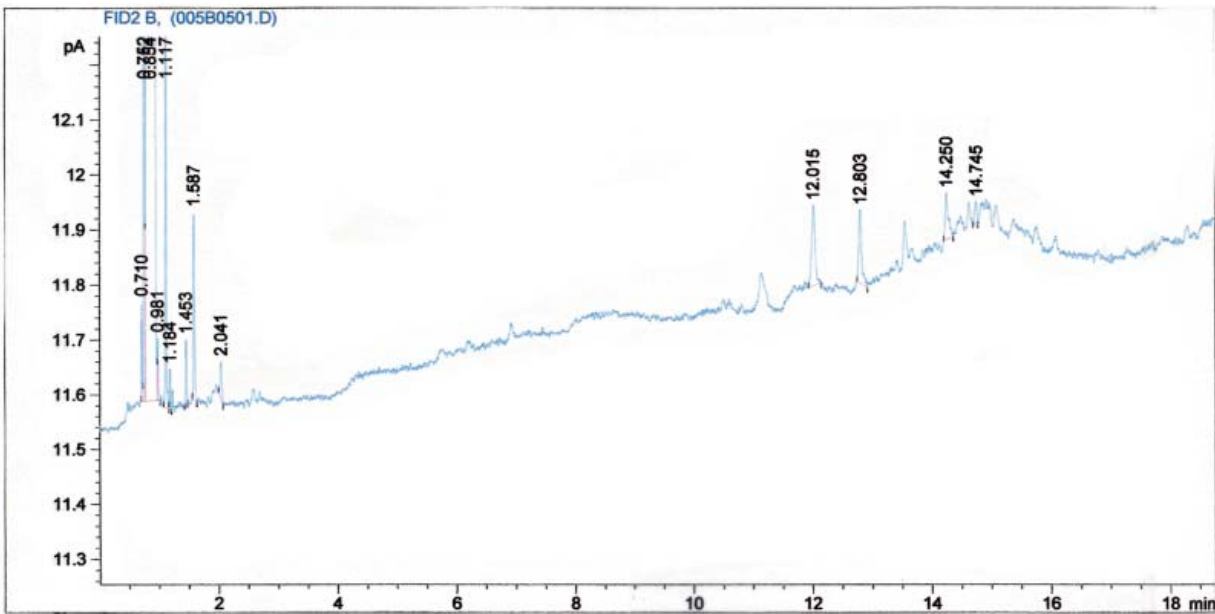


Material	Lot	Batch	Expiration date
Charcoal, 20/40 mesh	2000	8812	May, 2014*

\* This expiration date is for sealed tubes. Tubes that are open-ended and made from this batch will have a shorter shelf life.

This batch of sorbent has met our QC requirements as outlined in SKC Procedure 4034.

  
Scott Marshall  
QA Administrator



All peaks less than 1000 ng/g calculated as Toluene.