



Certificate of Analysis

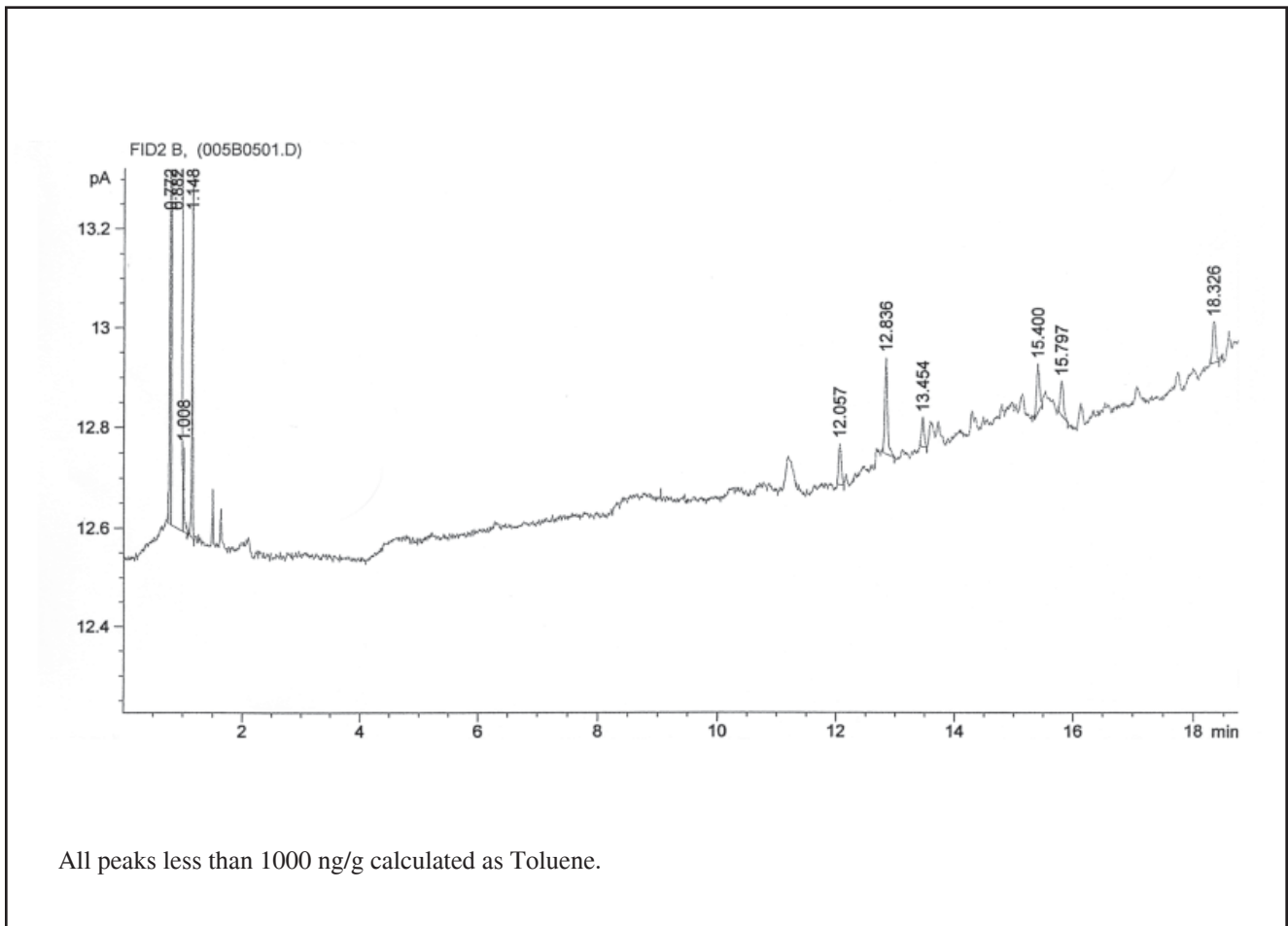


Material	Lot	Batch	Expiration date
Anasorb 747	5892	8723	February, 2014*

* This expiration date is for sealed tubes. Tubes that are open-ended and made from this batch will have a shorter shelf life.

This batch of sorbent has met our QC requirements as outlined in SKC Procedure 4026.

Scott Marshall
QA Administrator



SKC Inc. • 863 Valley View Road, Eighty Four, PA 15330 • Phone: 724-941-9701 • Fax: 724-941-1369
www.skinc.com