



# Certificate of Analysis

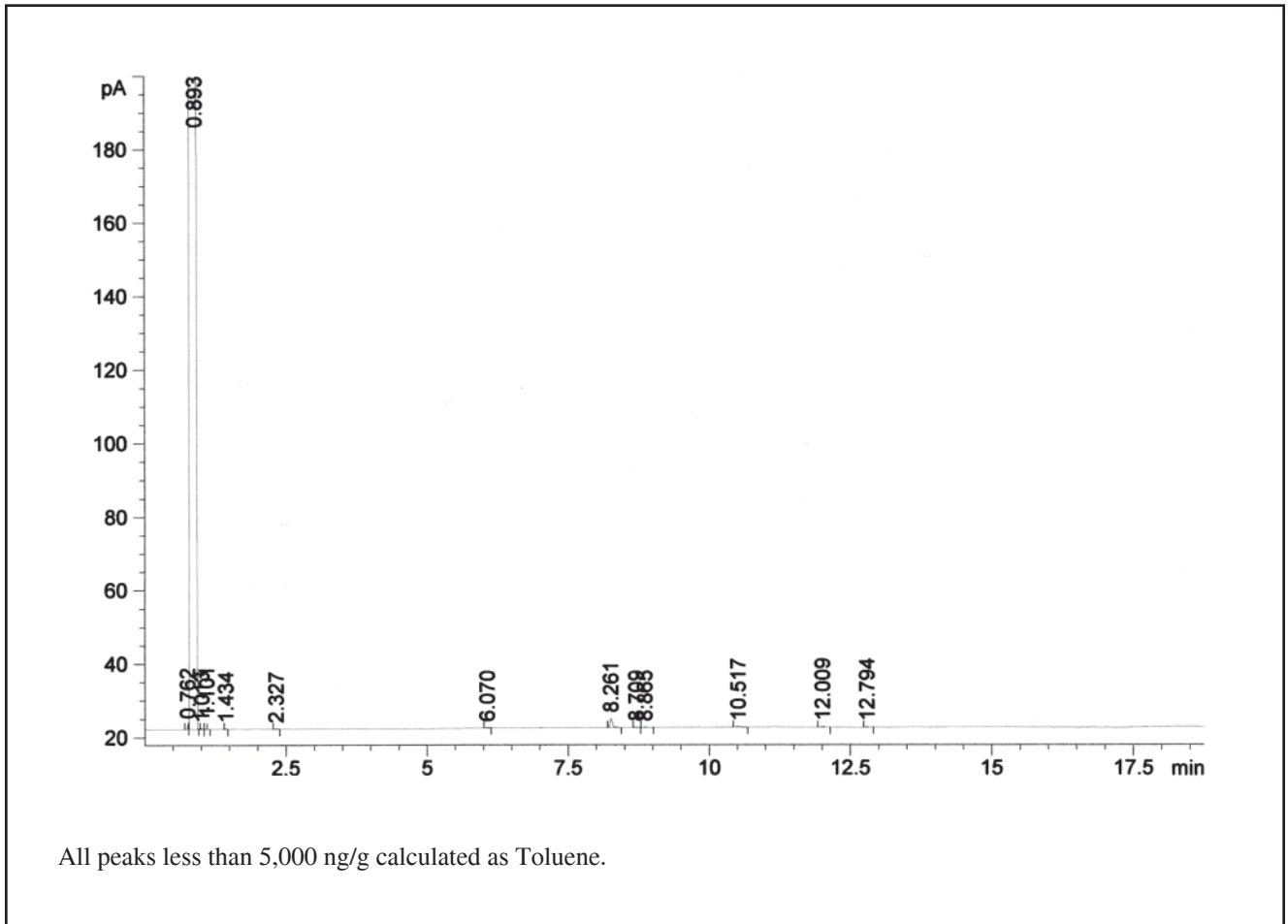


Material	Lot	Batch	Expiration date*
Anasorb CMS	6324	9109	December, 2014

\* This expiration date is for sealed tubes. Tubes that are open-ended and made from this batch will have a shorter shelf life.

This batch of sorbent has met our QC requirements as outlined in SKC Procedure 4036.

  
Scott Marshall  
QA Administrator



All peaks less than 5,000 ng/g calculated as Toluene.