

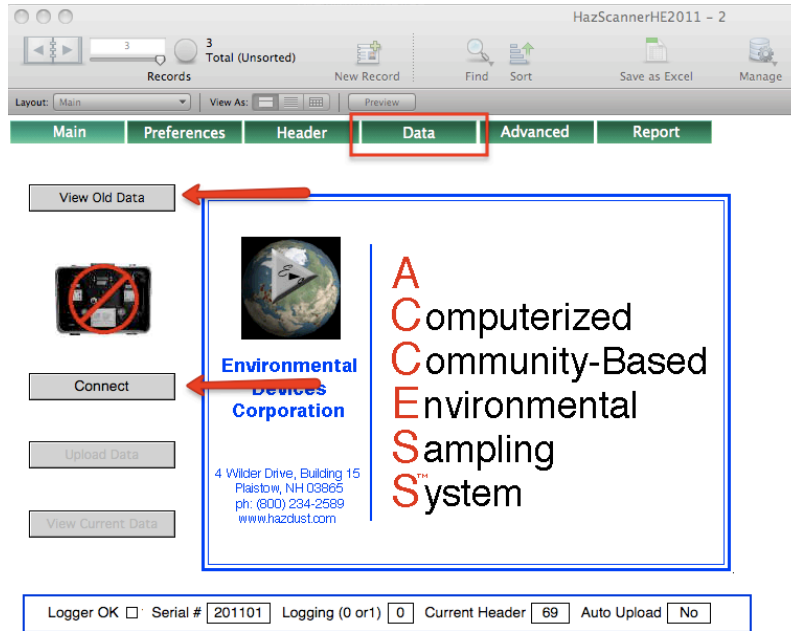
HazComm Software Manual for use with HazScanner Model: EPAS

V.2 2/21/2011



From the Main Screen you can either connect to the HazScanner or View Old Data, which views, generates and print reports. While connected you should not open old data.

From the Main Screen you can either connect to the HazScanner or View Old Data, which views, generates and prints reports. While connected you should not open old data.



CONNECTED TO HazScanner

To connect:

Make sure the correct Port is selected on the *Preferences* Screen.

Connect the Hazscanner to your computer.

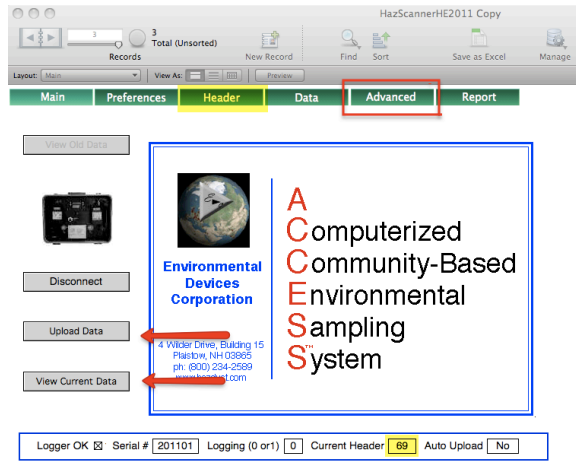
Press the Connect button

You will be asked if you want to use the the current Header or create a new header. (the first time through you have to create a new header)

A new header should be created if you have turned logging off since the last upload.

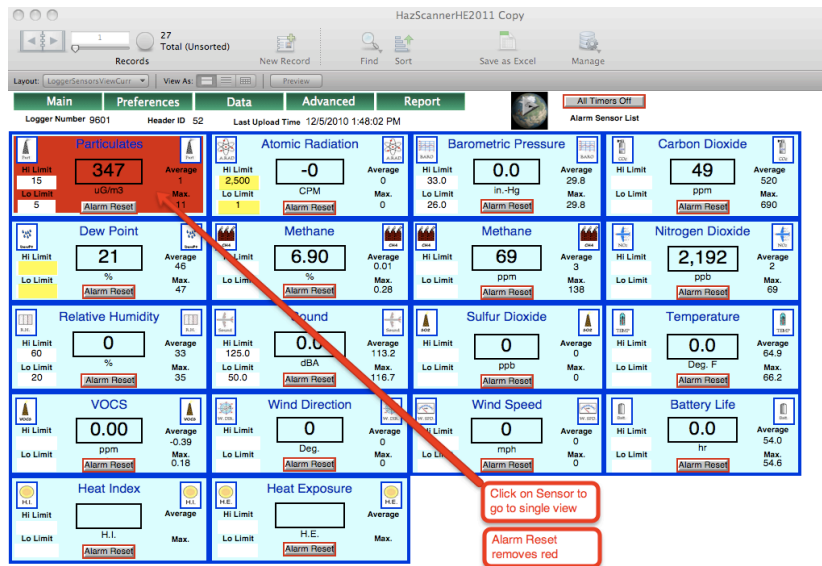
(Otherwise the data in the file will not have a time gap) If you are not logging and there is no new data in the Hazscanner you can use old header or you want to append the new data to the last upload. Under the view data section you will be told how to make reports from multiple headers.

Once connected there are three main functions: Upload Data, View Current Data (which includes setting and receiving alarms, and zeroing sensors), and Advanced.



Upload Data:
 Push the *Upload Data* button
 Review and finish filling out the Header Data.
 Push the blue Continue button

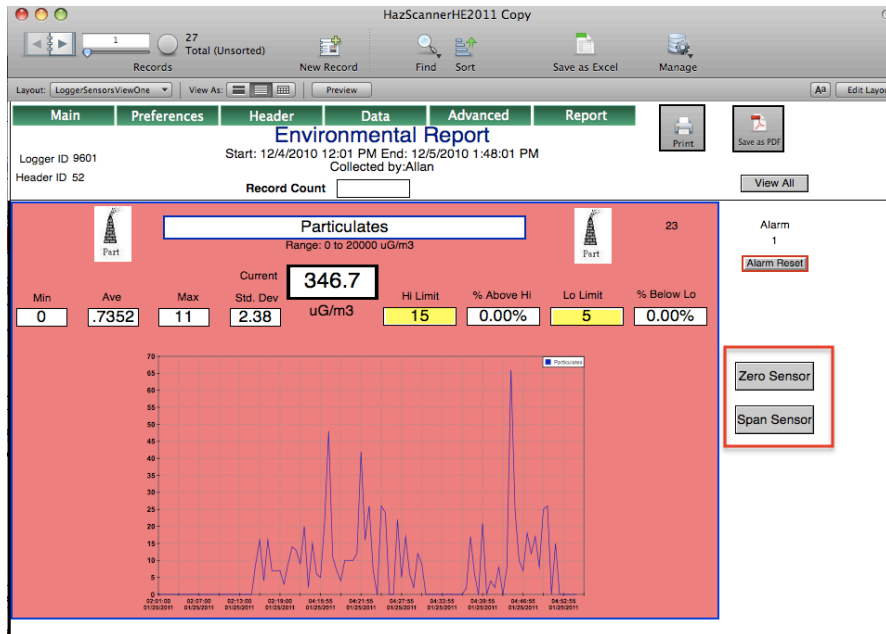
View Current Data
 Push the *View Current Data* button



If you are currently datalogging this will upload existing data. If you have a lot of data in the HazScanner, Upload the data before viewing.

This screen will display the current values, average and maximum. You can set and view limits here by typing into the Hi Limit or Lo Limit fields. The background of a sensor will turn red if it has exceeded a High Limit limit. It will stay red even if the value goes down until you press the *Alarm Reset* button.

If you click on an individual sensor it will take you to a screen that will a more detailed data summary and graph of that sensor. The information displayed here is all the data for the current header only.



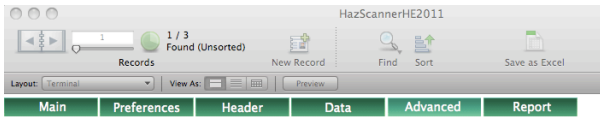
If you are not logging on this screen you can Zero or Span a sensor by selecting the button. If you are setting both a zero and a span. Do the zero first then the span. The zero function does not change the slope of the in/out ratio. The Span does. Use zero gas to zero sensors. After setting the zeroes and spans **do not turn the system off**. It will reset to factory settings. **DO NOT DO UNLESS YOU ARE SURE**.

The *print* button here is more designed for the data side but you can print the current group (the button prints ALL sensors). To print an individual sensor from the layout menu go to the *LoggerSensorsViewPrint* layout first and then select print from the menu and choose 'Current record' to print just 1 graph.

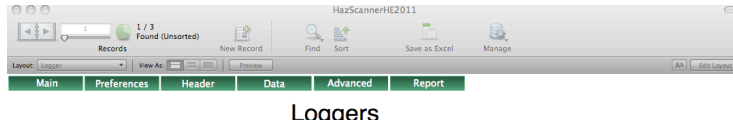
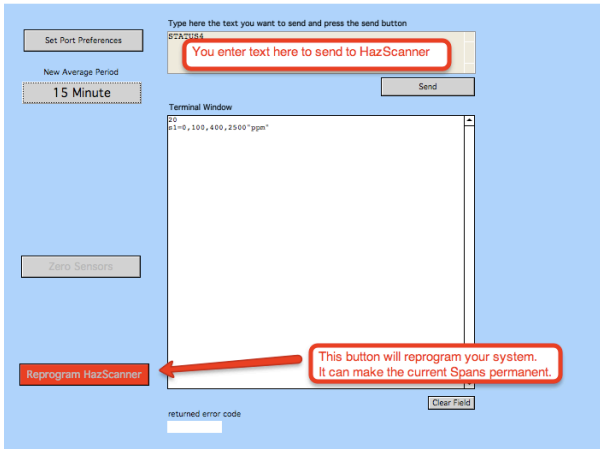
Advanced

Use the screen to troubleshoot the system with Tech support. It is used to directly send commands to the HazScanner.

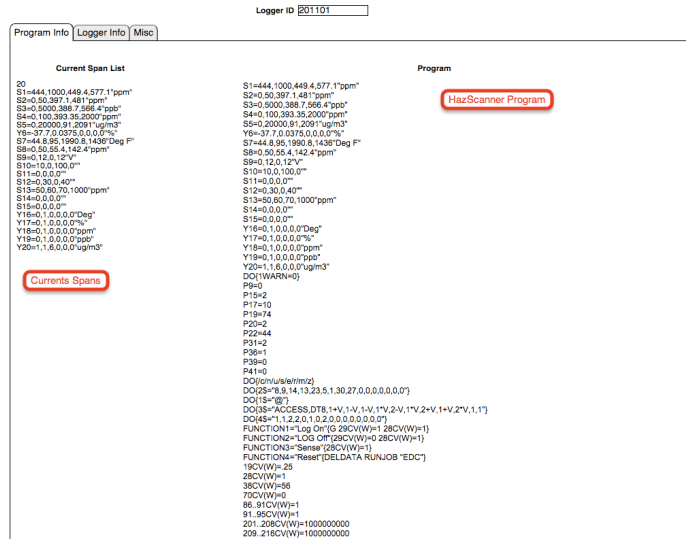
If you have zeroed or set new spans on your sensors. 'Reprogram HazScanner' this will overwrite the factory setting and make it possible to turn the system off and have the new spans. If the spans in the Span List are the same as the beginning of the Program then the system is up to date. It is best to not use this and reset the zeros and spans before starting a new session and leaving the factory settings for the default.



Advanced Communication



Loggers



VIEWING DATA

Disconnect, if you are connected to the HazScanner

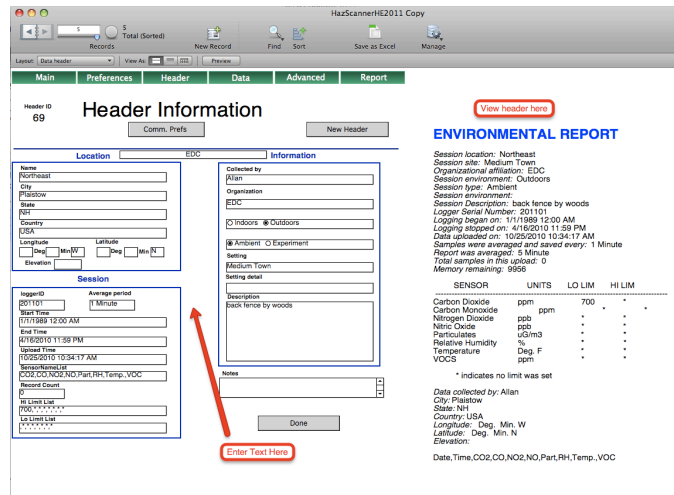
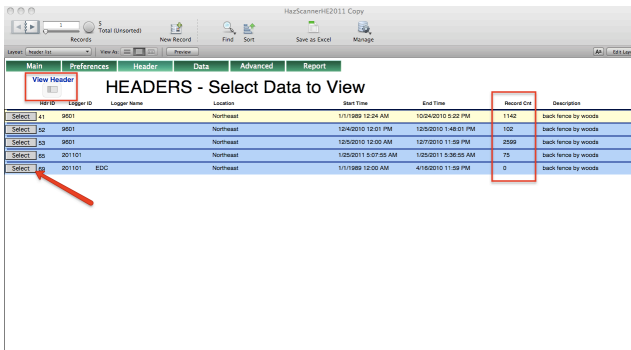
Option 1: (Best choice)

Push the *View Old Data* button

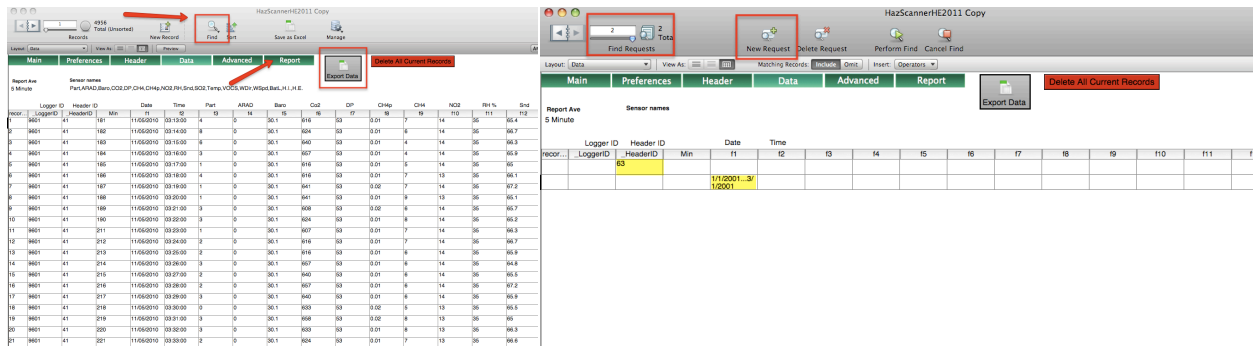
This will take you to a list of Headers (all data is associated with a header)

Press *Select* next to the data you want to view and create reports.

Press *View Header* to view or edit the header. This is the text that will export with the data and print with a report. You can edit it here. The sensor table some time times needs tabs added or deleted to make things line up. To delete place cursor to the right of the tab and delete. To add a tab, you need to hold down the 'Alt' key and then push tab. (Just a tab takes you to the field)



Option 2:
Select *Data* from the menu at the top



Push the *Find* icon.

You can then enter dates 1/1/2001..3/1/2001

You can enter a known header #

You can then Perform Find, Constrain Found Set, or Extend Found Set.

If you enter data in 2 fields when you do a find it acts as an “and” statement.

entering 1/1/2001..3/1/2001 in the date field and 63 in the header field will only find records from header 63 during that time period.

You can use the *New Request* button and the find will act as a “or” find you enter 1/1/2001..3/1/2001 in the date field

Push the *New Request* button and add 63 in the header field and the find will include all records either during 1/1/2001..3/1/2001 OR made with header 63

Finds can be useful to group multiple uploads together for 1 report but usually option 1 will give all the data from 1 dataset.

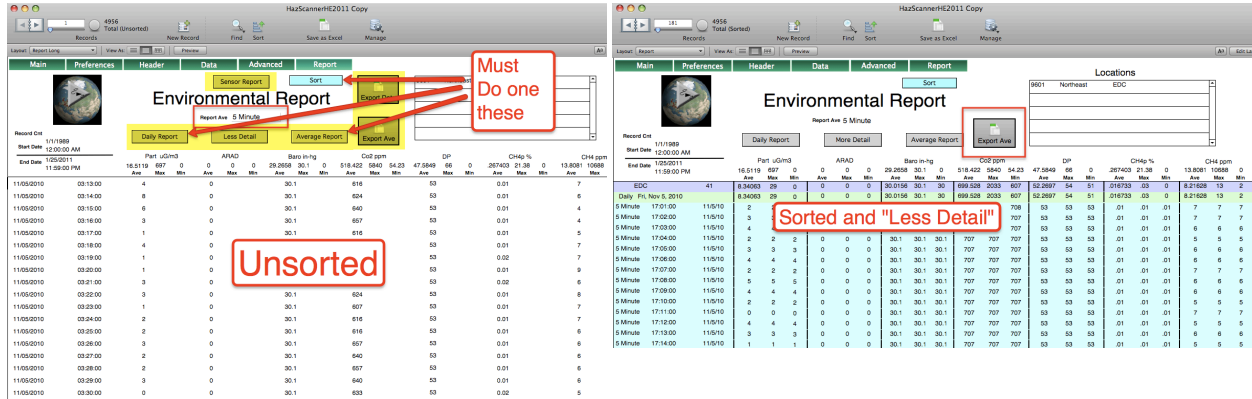
From the Data window you can push the *Export Data* button, this will export a tab delimited data file with a full header. You can print this or import the data into Excel (delimited data option) and start on the row with the sensor names.

OR

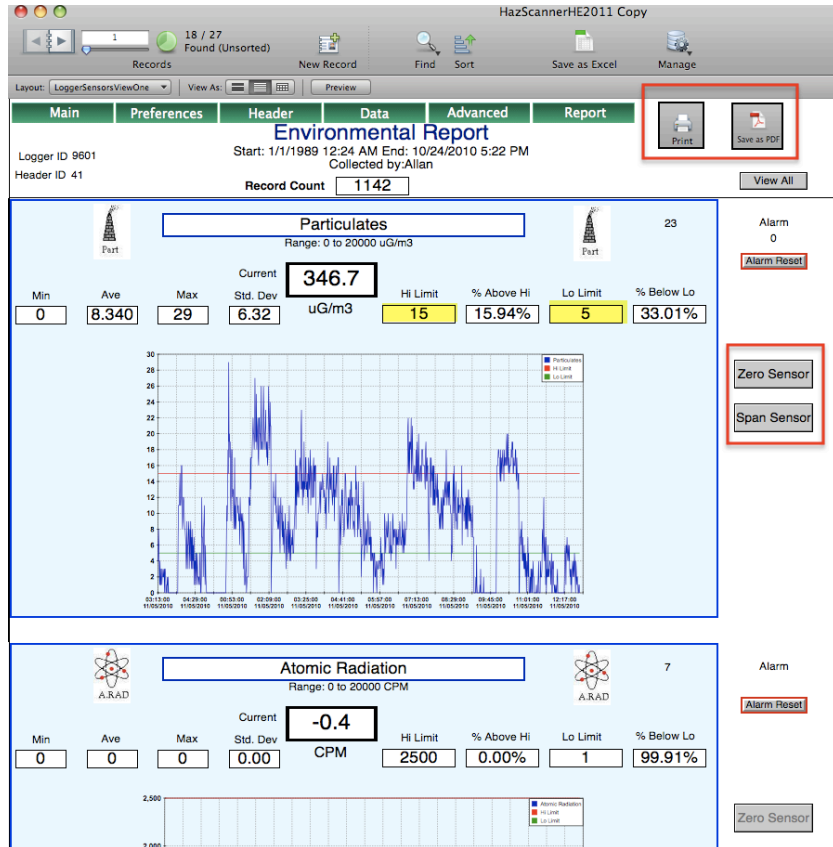
Select *Report* from the menu bar.

You can select an Average period for your report from the drop down list in the Report Ave field.

Then Push one of the buttons *Sort*, *Daily Report*, *Average Report*.
 The *Less Detail* will now show the summary detail.



Export Data does the same thing as in the Data window.
Export Ave will export the summary based on the Report Ave period. If you want to export a daily average select 24 hours for your average period.
 The *Sensor Report* button will take you to a graphic report with a graph of each sensor with min, max and other information all based on the original data. This will not change by changing the average period. You can add limits here and leave the report and return to generate a report that gives % above high limits and below low limits.



For further assistance contact:



Environmental Devices Corporation

603-378-2112

800-234-2589

fax 603-378-2113

sales@hazdust.com

4 Wilder Drive, Building 15

Plaistow NH 03865

USA